

Hungarian March

Trombone 2

Hector Berlioz

91 *poco cresc.* **20** *mf cresc. ff ff*

99 *ff ff*

104

110 **21**

Symphony No. 3

Trombone 1

Camille Saint-Saens

The image shows a musical score for Trombone 1 and Organ. The top staff is for the 1st Trombone, marked '1^{er} Tromb.' and 'Q'. It begins with a dynamic marking of *p* and a *poco cresc.* instruction. The bottom staff is for the Organ, marked 'Orgue' and 'R 8'. It begins with a dynamic marking of *p*. The score is written in a key signature of two flats (B-flat and E-flat) and a 2/4 time signature. The music features a melodic line in the trombone and a supporting bass line in the organ.

Trombone 1

Hamlet

Act 1, Scene 2

A. Thomas

Andantino Solo *espress.*

p

cresc. *dim.* *p*

p *sf*

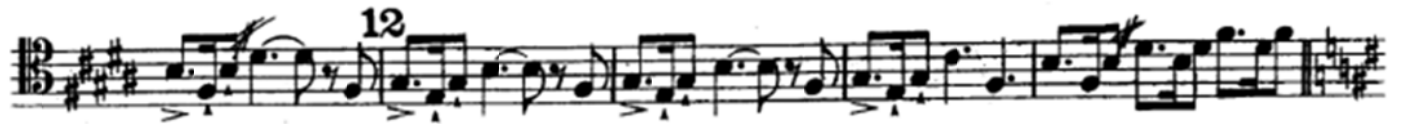
sf *sempre cresc.* *ff* *dim.* *p*

Detailed description: The musical score is written for a single Trombone 1 part. It begins with a bass clef, a key signature of two flats (B-flat major), and a 4/4 time signature. The tempo is marked 'Andantino' and the performance style is 'Solo espress.'. The first staff starts with a dynamic of *p* (piano). The second staff continues with a melodic line. The third staff features dynamics of *cresc.* (crescendo), *dim.* (diminuendo), and *p*. The fourth staff includes *p* and *sf* (sforzando). The fifth staff continues with *sf*. The final staff concludes with *sf*, *sempre cresc.*, *ff* (fortissimo), *dim.*, and *p*. The score includes various musical notations such as slurs, ties, and dynamic hairpins.

Ride of the Valkuries

Trombone 1

Richard Wagner



Romeo and Juliet

Trombone 1

Hector Berlioz

Fieramente, un poco ritenuto, col carattere di Recitativo misurato.

f

cresc. - - - - - *dim.*

senza accel. *ff*

ff *ff*

un poco rit. *a tempo*

ff *ff* *dim.*